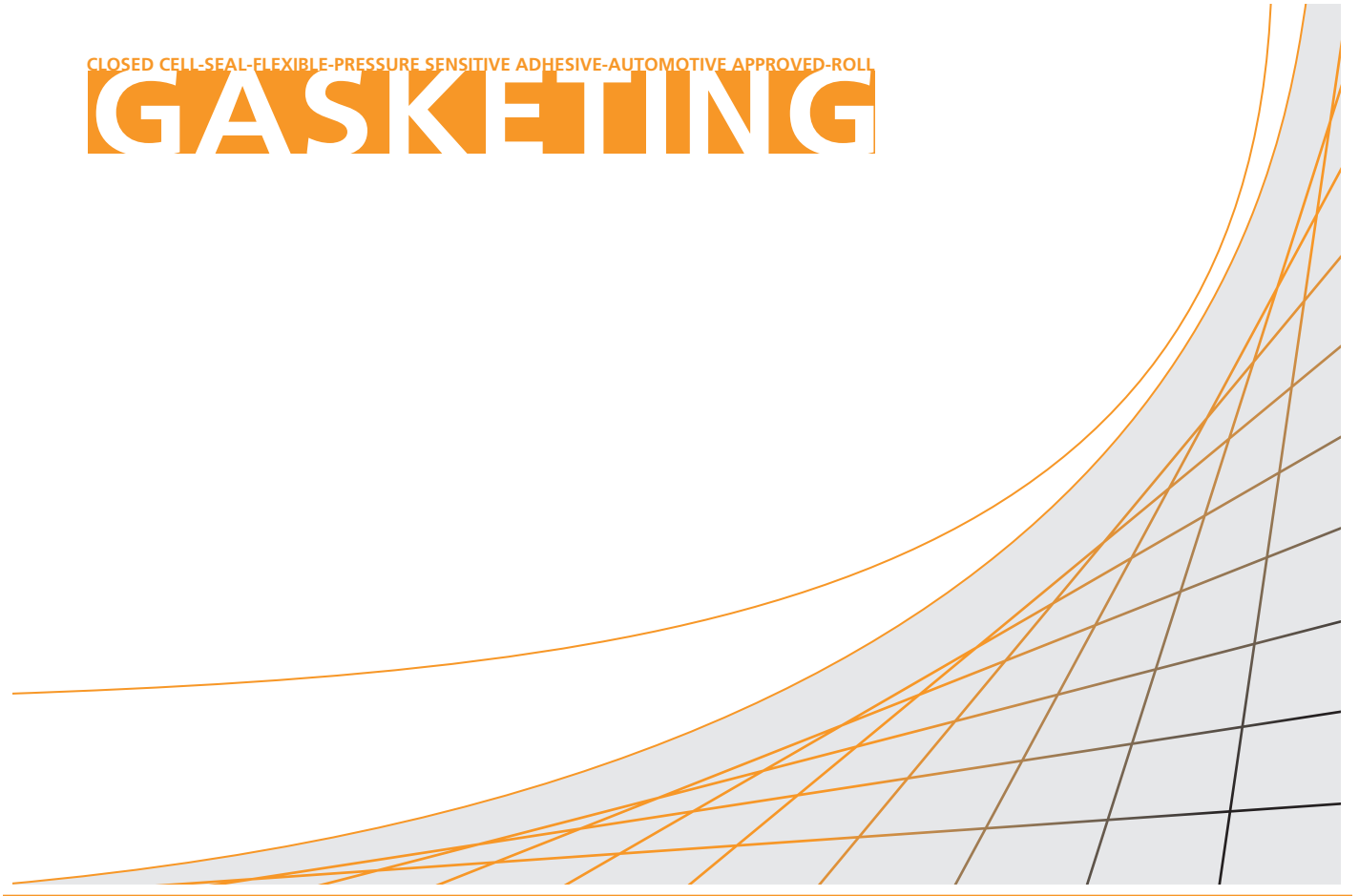


CLOSED CELL-SEAL-FLEXIBLE-PRESSURE SENSITIVE ADHESIVE-AUTOMOTIVE APPROVED-ROLL

GASKETING



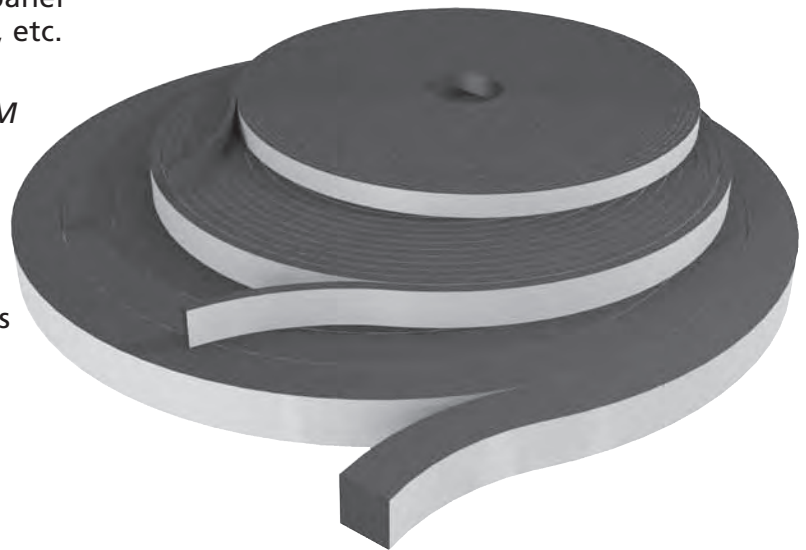
Neoprene Gasketing

Black closed cell neoprene with one side pressure sensitive adhesive. Used primarily as a gasket seal for storage boxes, electrical panel enclosures, trucks and trailers, toolboxes, etc. Highly flexible with no distortion.

Meets the following standards: *GM6086M Type II, ASTM D1056-01 2A1, CSA C22.2, FMVSS-302.*

Custom Sizes Available

Custom widths available in all thicknesses shown.



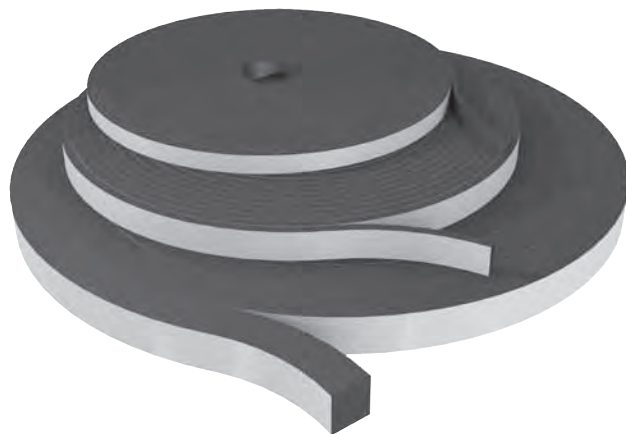
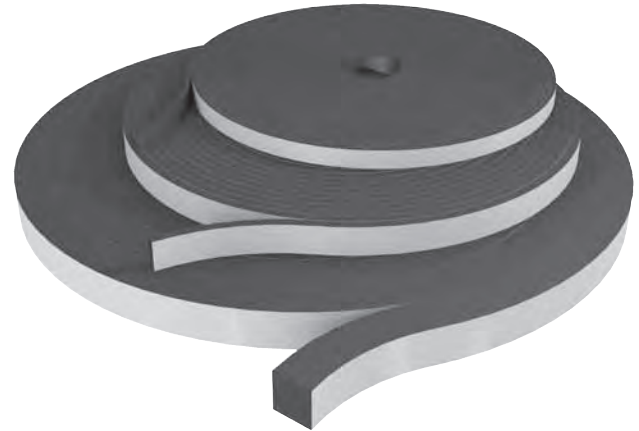
Neoprene Gasket

Closed Cell Neoprene

Mat: Neoprene | Color: Black | PSA with paper backing

Part Number	Stock Item	Thickness	Width	Roll Length
556-NP11638900		1/16"	3/8"	100'
556-NP11612900		1/16"	1/2"	100'
556-NP1161900		1/16"	1"	100'
556-NP1814900		1/8"	1/4"	50'
556-NP1838900	S	1/8"	3/8"	50'
556-NP1812900	S	1/8"	1/2"	50'
556-NP1834900	S	1/8"	3/4"	50'
556-NP181900	S	1/8"	1"	50'
556-NP18112900	S	1/8"	1-1/2"	50'
556-NP31634900	S	3/16"	3/4"	50'
556-NP3161900	S	3/16"	1"	50'
556-NP316114900		3/16"	1-1/4"	50'
556-NP1412900	S	1/4"	1/2"	37.5'
556-NP1434900	S	1/4"	3/4"	37.5'
556-NP141900	S	1/4"	1"	37.5'
556-NP144900		1/4"	4"	37.5'
556-NP3812900	S	3/8"	1/2"	25'
556-NP3834900	S	3/8"	3/4"	25'
556-NP381900	S	3/8"	1"	25'
556-NP1212900		1/2"	1/2"	15'
556-NP1238900		1/2"	3/8"	15'
556-NP121900		1/2"	1"	15'
556-NP3434900		3/4"	3/4"	12.5'
556-NP34112900		3/4"	1-1/2"	12.5'

S - Stock item



Technical Data

Physical Properties	Typical Results	Test Method
Composition	Neoprene	N/A
Cell Structure	Closed	N/A
Color	Black	N/A
Grade	2A1	ASTM D1056
Density (PCF)	5-7 / 0.080 - 0.112	ASTM D1667
CDF @ 25% [psi/kPa]	2 - 5 / 14 - 35	ASTM D1056
Shore OO Durometer	35 - 55	ASTM D1056
Compression Set @ 50% (%)	50%	ASTM D1056
Tensile Strength (psi/kPa)	25 / 175	ASTM D412
Tear Strength [lb./in / kN/m]	10 / 1.8	ASTM D624
Elongation (%)	90% min	ASTM D412 (Die A)
Water Absorption (lb./ft. sq.)	0.1 max	ASTM D1667
Flame Resistance	Pass	FMVSS 302

Service Temp (Recommended)	(Degrees F / Degrees C)	
Low	-70 / -56	N/A
High Continuous	200 / 93	
High Intermittent	250 / 121	

Accelerated Aging	(7 Days at 70° C (158° F))	
Flexibility (180 degree bend without breaking).	No Change	ASTM D1056
Appearance Change	No Change	
Change in Compression Deflection (%).	+/- 30% max	