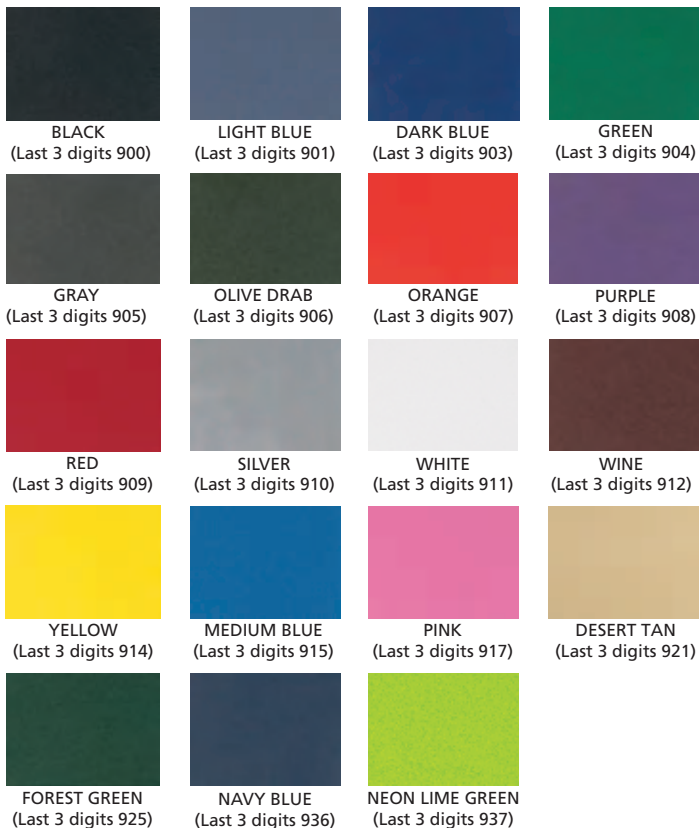
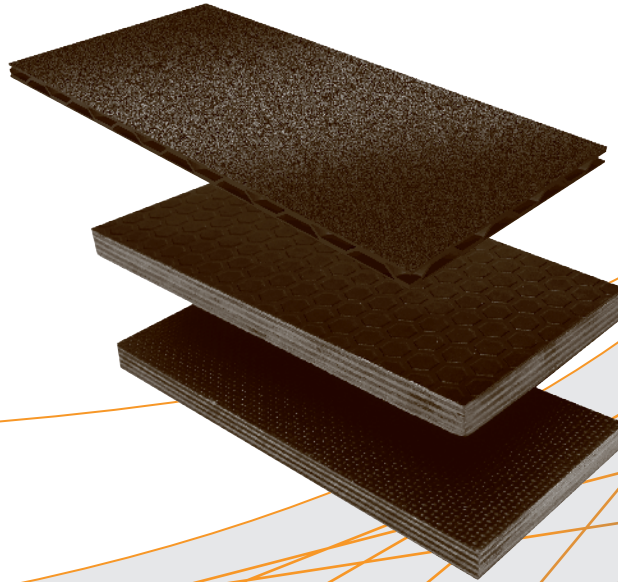


PANEL SYSTEMS-SKINS-CORES-COMPOSITE MATERIALS-ALUMINUM-FIBERGLASS-ABS-TEXTURED

LAMINATE



ABS Laminating Skins

Mat: ABS Plastic | Total Thickness: 1mm / .04" | Wt: 3.21kg / 7.08lbs

Part Number	Color
510-3500900	Black
510-3500901	Light Blue
510-3500903	Dark Blue
510-3500904	Green
510-3500905	Gray
510-3500906	Olive Drab
510-3500907	Orange
510-3500908	Purple
510-3500909	Red
510-3500910	Silver
510-3500911	White
510-3500912	Wine
510-3500914	Yellow
510-3500915	Medium Blue
510-3500917	Pink
510-3500921	Desert Tan
510-3500925	Forest Green
510-3500936	Navy Blue
510-3500937	Neon Lime Green

- Durable rigid ABS plastic sheet that withstands harsh environments.
- texture on top surface.
- Sheet size is 47-1/2" x 95-1/2".

Note: The chart above should be used as a general reference only - actual laminate colors may vary. TCH cannot be held responsible for variation from the Laminate Color Chart of any laminate product because of dye fluctuations on the ABS plastic from run to run and because of the inherent limitations of the four-color printing process used in this catalog.

ABS Laminates

ABS plastic sheets pre-laminated to sheets of plywood in your choice of 4 thicknesses and over 19 colors.

Other thicknesses available upon request.

Meets A.T.A. specifications.

Overall sheet size: 48" x 96",
ABS skin is inset 1/4" from all edges.



ABS Skin + 1/8" Laminate

ABS skin laminated to Luan Plywood Core

Mat: ABS / Luan ply | Total Thickness: 4mm / .16" | Wt: 7.45kg / 16.42lbs

Part Number	Color	Part Number	Color
510-3512900	Black	510-3512911	White
510-3512901	Light Blue	510-3512912	Wine
510-3512903	Dark Blue	510-3512914	Yellow
510-3512904	Green	510-3512915	Medium Blue
510-3512905	Gray	510-3512917	Pink
510-3512906	Olive Drab	510-3512921	Desert Tan
510-3512907	Orange	510-3512925	Forest Green
510-3512908	Purple	510-3512936	Navy Blue
510-3512909	Red	510-3512937	Neon Lime Green
510-3512910	Silver		

ABS Skin + 1/4" Laminate

ABS skin laminated to Birch Plywood Core

Mat: ABS / Birch ply | Total Thickness: 6mm / .24" | Wt: 12.05kg / 26.58lbs

Part Number	Color	Part Number	Color
510-7524900	Black	510-7524911	White
510-7524901	Light Blue	510-7524912	Wine
510-7524903	Dark Blue	510-7524914	Yellow
510-7524904	Green	510-7524915	Medium Blue
510-7524905	Gray	510-7524917	Pink
510-7524906	Olive Drab	510-7524921	Desert Tan
510-7524907	Orange	510-7524925	Forest Green
510-7524908	Purple	510-7524936	Navy Blue
510-7524909	Red	510-7524937	Neon Lime Green
510-7524910	Silver		

ABS Skin + 3/8" Laminate

ABS skin laminated to Birch Plywood Core

Mat: ABS / Birch ply | Total Thickness: 10mm / .38" | Wt: 19.77kg / 41.58lbs

Part Number	Color	Part Number	Color
510-7538900	Black	510-7538911	White
510-7538901	Light Blue	510-7538912	Wine
510-7538903	Dark Blue	510-7538914	Yellow
510-7538904	Green	510-7538915	Medium Blue
510-7538905	Gray	510-7538917	Pink
510-7538906	Olive Drab	510-7538921	Desert Tan
510-7538907	Orange	510-7538925	Forest Green
510-7538908	Purple	510-7538936	Navy Blue
510-7538909	Red	510-7538937	Neon Lime Green
510-7538910	Silver		

ABS Skin + 1/2" Laminate

ABS skin laminated to Birch Plywood Core

Mat: ABS / Birch ply | Total Thickness: 13mm / .52" | Wt: 23.76kg / 52.38lbs

Part Number	Color	Part Number	Color
510-7560900	Black	510-7560911	White
510-7560901	Light Blue	510-7560912	Wine
510-7560903	Dark Blue	510-7560914	Yellow
510-7560904	Green	510-7560915	Medium Blue
510-7560905	Gray	510-7560917	Pink
510-7560906	Olive Drab	510-7560921	Desert Tan
510-7560907	Orange	510-7560925	Forest Green
510-7560908	Purple	510-7560936	Navy Blue
510-7560909	Red	510-7560937	Neon Lime Green
510-7560910	Silver		

Textured Fiberglass



510-3600900
Textured Black



510-3600903
Textured Dark Blue



510-3600909
Textured Red



510-3600911
Textured White

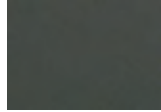
Smooth Fiberglass



510-3700900
Smooth Black



510-3700903
Smooth Dark Blue



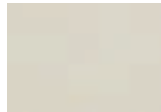
510-3700905
Smooth Gray



510-3700909
Smooth Red



510-3700911
Smooth White



510-3700918
Smooth Light Gray

Fiberglass Laminating Skin Sheets

Mat: Fiberglass | Total Thickness: .6mm / .025" | Wt: 4.31kg / 9.50lbs

Textured surface

Part Number Color

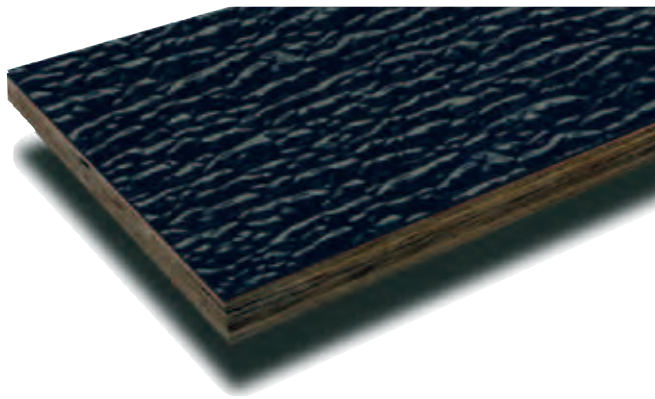
510-3600900	Black
510-3600903	Dark Blue
510-3600909	Red
510-3600911	White

Smooth surface

Part Number Color

510-3700900	Black
510-3700903	Dark Blue
510-3700905	Gray
510-3700909	Red
510-3700911	White
510-3700918	Light Gray

- Available with a pebbled texture or smooth top surface.
- Sheet size is 47-1/2" x 95-1/2".



Fiberglass Laminates

Fiberglass (FRP) sheets pre-laminated to sheets of plywood in your choice of 4 thicknesses.

Other thicknesses available upon request.

Meets A.T.A. specifications.

Sold in sheets 48" x 96". FRP skin is inset 1/4" from all edges.

Available in textured or smooth finish.

Fiberglass Skin + 1/8" Laminate

FRP skin laminated to Luan Plywood Core

Mat: Fiberglass / Luan ply | Total Thickness: 4mm / .16" | Wt: 9.01kg / 19.86lbs

Textured surface

Part Number Color

510-3612900	Black
510-3612903	Dark Blue
510-3612909	Red
510-3612911	White

Smooth surface

Part Number Color

510-3712900	Black
510-3712903	Dark Blue
510-3712905	Gray
510-3712909	Red
510-3712911	White
510-3712918	Light Gray

Fiberglass Skin + 1/4" Laminate

FRP skin laminated to Birch Plywood Core

Mat: Fiberglass / Birch ply | Total Thickness: 6mm / .24" | Wt: 13.61kg / 30.00lbs

Textured surface

Part Number Color

510-7624900	Black
510-7624903	Dark Blue
510-7624909	Red
510-7624911	White

Smooth surface

Part Number Color

510-7724900	Black
510-7724903	Dark Blue
510-7724905	Gray
510-7724909	Red
510-7724911	White
510-7724918	Light Gray

Fiberglass Skin + 3/8" Laminate

FRP skin laminated to Birch Plywood Core

Mat: Fiberglass / Birch ply | Total Thickness: 10mm / .38" | Wt: 20.64kg / 45.50lbs

Textured surface

Part Number Color

510-7638900	Black
510-7638903	Dark Blue
510-7638909	Red
510-7638911	White

Smooth surface

Part Number Color

510-7738900	Black
510-7738903	Dark Blue
510-7738905	Gray
510-7738909	Red
510-7738911	White
510-7738918	Light Gray

Fiberglass Skin + 1/2" Laminate

FRP skin laminated to Birch Plywood Core

Mat: Fiberglass / Birch ply | Total Thickness: 13mm / .52" | Wt: 24.04kg / 53.00lbs

Textured surface

Part Number Color

510-7660900	Black
510-7660903	Dark Blue
510-7660909	Red
510-7660911	White

Smooth surface

Part Number Color

510-7760900	Black
510-7760903	Dark Blue
510-7760905	Gray
510-7760909	Red
510-7760911	White
510-7760918	Light Gray

Aluminum Laminating Skins

Mat: Aluminum | Total Thickness: .6mm / .025" | Wt: 5.22kg / 11.51lbs

Part Number	Color
510-3500806	Textured aluminum

- Sheet size is 47-1/2" x 95-1/2"

Aluminum Laminates

Textured Aluminum Skin on Plywood Core

Part Number	Type	Thickness mm / in	Weight Kg / lbs
510-3512806	Luan	3 / .125	9.98 / 22.0
510-7524806	Birch	6 / .250	14.52 / 32.0
510-7538806	Birch	10 / .375	21.5 / 47.5
510-7560806	Birch	13 / .500	24.3 / 53.5

- Aluminum sheets pre-laminated to sheets of plywood in your choice of 4 thickness. Other thicknesses available upon request.
- Meets A.T.A. specifications.
- Overall sheet size is 48" x 96", aluminum skin is inset 1/4" from all edges.



Laminating Cores - Plywood

Part Number	Type	Thickness mm / in	Weight Kg / lbs
510-3512999	Luan	3 / .125	4.5 / 9.92
510-9424999	Fir	6 / .250	11.34 / 25.0
510-7024999	Birch	6 / .250	8.8 / 19.5
510-7038999	Birch	10 / .375	15.7 / 34.5
510-7060999	Birch	13 / .500	20.6 / 45.3

- Listed thicknesses of plywood are stock items; other types of plywood are available as special order items.
- Sheets size: 48" x 96".



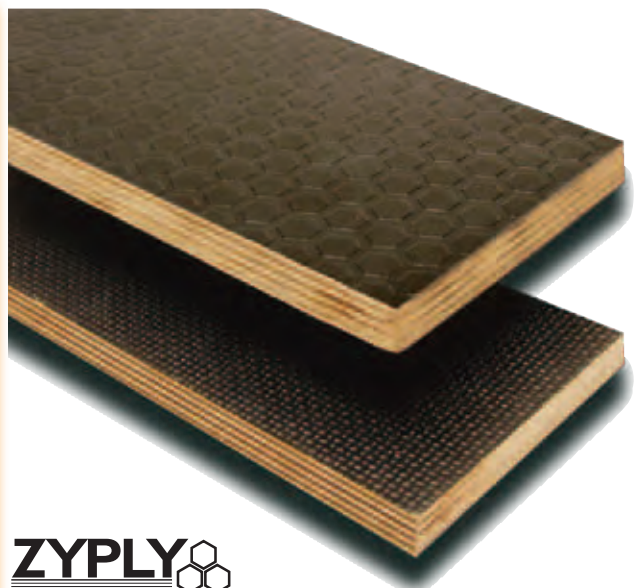
Zyply Laminates

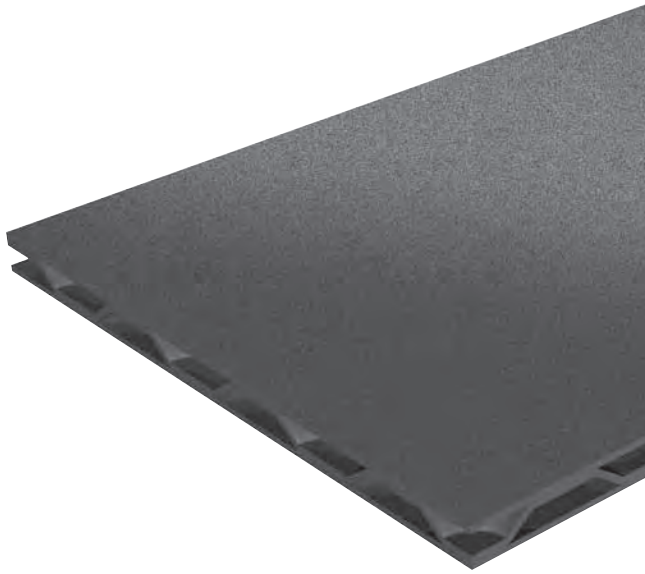
Textured Skin on Phenolic Plywood Core

Part Number	Texture Type	Thickness mm / in	Weight Kg / lbs	Stock item
510-6138900	Wire Mesh	9 / 0.35	17.24 / 38.0	
510-6160900	Wire Mesh	12 / 0.47	23.13 / 51.0	
510-6238900	Hexagon	9 / 0.35	17.24 / 38.0	
510-6260900	Hexagon	12 / 0.47	23.13 / 51.0	S

S - Stock item

- Black texture on top side with smooth phenolic bottom side.
- Sold in sheets 48" x 96".
- Some Items may be available by special order only. Minimum quantities may apply.





T-Kore

T-Kore

1/4" Tri-layer ABS Laminate

Mat: Tri-layer ABS | Total Thickness: 6mm / .25" | Wt: 9.09kg / 20.00lbs

Part Number	Color	Part Number	Color
510-5025900	Black	510-5025910	Silver
		510-5025933	Sky Blue

3/8" Tri-layer ABS Laminate

Mat: Tri-layer ABS | Total Thickness: 10mm / .37" | Wt: 15.12kg / 33.33lbs

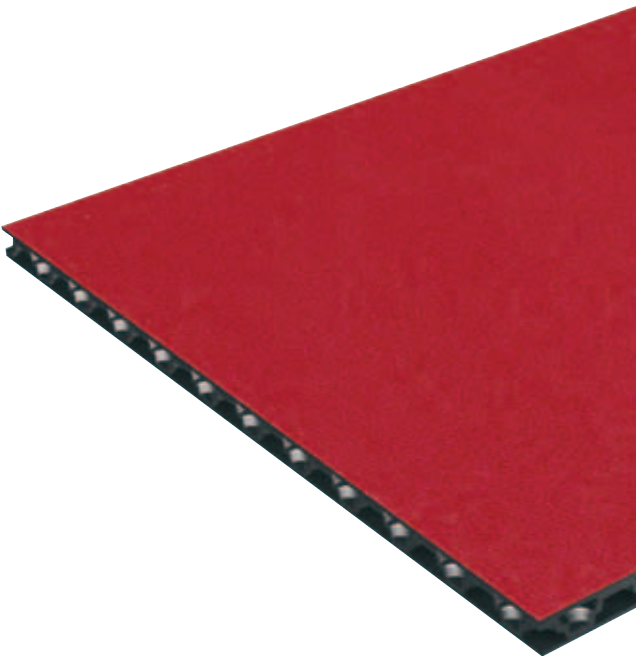
Part Number	Color	Part Number	Color
510-5038900	Black	510-5038910	Silver
		510-5038933	Sky Blue

1/2" Tri-layer ABS Laminate

Mat: Tri-layer ABS | Total Thickness: 13mm / .50" | Wt: 18.18kg / 40.00lbs

Part Number	Color	Part Number	Color
510-5050900	Black	510-5050910	Silver
		510-5050933	Sky Blue

- T-Kore is a 3 layer thermoplastic structured sheet with exceptionally good high temperature performance. It has a high tensile strength combined with high impact strength and stiffness, excellent fabricating, good ductility and low temperature properties.
- Ideal structural material for A.T.A. cases, crates, packaging applications, and re-usable shipping containers.
- Resists thermal distortion and also resists many chemicals.
- Can be treated and handled like plywood with conventional tools.
- Sheet size is 48" x 96"
- Custom colors available, minimum quantities may apply.



"The Board"

1/4" Polypropylene Tri-laminate with an Air-Loaded Cell Core

Mat: Polypropylene | Total Thickness: 6mm / .25" | Wt: 8.0kg / 17.8lbs

Part Number	Color	Stock	Part Number	Color	Stock
510-4125900	Black	S	510-4125918	Light Gray	S
510-4125909	Red	S	510-4125933	Sky Blue	S

3/8" Polypropylene Tri-laminate with an Air-Loaded Cell Core

Mat: Polypropylene | Total Thickness: 10mm / .39" | Wt: 8.6kg / 19.0lbs

Part Number	Color	Stock	Part Number	Color	Stock
510-4138900	Black	S	510-4138918	Light Gray	
510-4138909	Red		510-4138933	Sky Blue	

1/2" Polypropylene Tri-laminate with an Air-Loaded Cell Core

Mat: Polypropylene | Total Thickness: 12mm / .39" | Wt: 13.6kg / 29.9lbs

Part Number	Color	Stock	Part Number	Color	Stock
510-4150900	Black	S	510-4150918	Light Gray	S
510-4150909	Red		510-4150933	Sky Blue	

S - Stock item

- Polypropylene composition makes this laminate 100% waterproof and resistant to most chemicals.
- Can be treated and handled like plywood with conventional tools.
- Some Items may be available by special order only. Minimum quantities may apply.
- Sheet size is 63-7/8 x 82-11/16"

Corrugated Polypropylene Laminate

Textured ABS Skin on a 1/4" Plastic Fluted Core

Mat: ABS/Polypropylene | Total Thickness: 6mm / .24" | Wt: 7.75kg / 17.07lbs

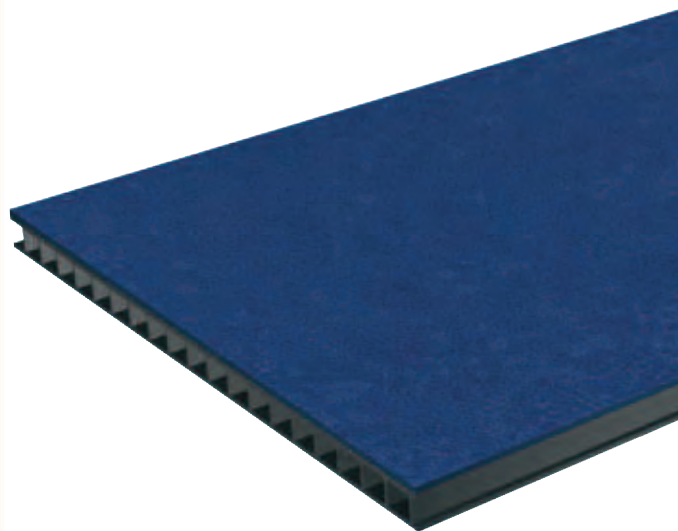
Part Number	Color	Part Number	Color
510-3520900	Black	510-3520911	White
510-3520901	Light Blue	510-3520912	Wine
510-3520903	Dark Blue	510-3520914	Yellow
510-3520904	Green	510-3520915	Medium Blue
510-3520905	Gray	510-3520917	Pink
510-3520906	Olive Drab	510-3520921	Desert Tan
510-3520907	Orange	510-3520925	Forest Green
510-3520908	Purple	510-3520936	Navy Blue
510-3520909	Red	510-3520937	Neon Lime Green
510-3520910	Silver		

Textured ABS Skin on a 3/8" Plastic Fluted Core

Mat: ABS/Polypropylene | Total Thickness: 10mm / .39" | Wt: 8.86kg / 19.5lbs

Part Number	Color	Part Number	Color
510-3540900	Black	510-3540911	White
510-3540901	Light Blue	510-3540912	Wine
510-3540903	Dark Blue	510-3540914	Yellow
510-3540904	Green	510-3540915	Medium Blue
510-3540905	Gray	510-3540917	Pink
510-3540906	Olive Drab	510-3540921	Desert Tan
510-3540907	Orange	510-3540925	Forest Green
510-3540908	Purple	510-3540936	Navy Blue
510-3540909	Red	510-3540937	Neon Lime Green
510-3540910	Silver		

- Fluted polypropylene core is laminated to ABS top skin.
- Lightweight alternative to plywood.
- Mold and mildew resistant.
- Fluted core is black.
- Overall sheet size is 48" x 96", ABS skin is inset 1/4" from all edges



Stage Guard

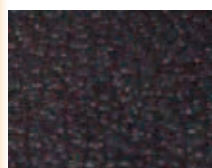
Textured Elastomeric Sheet on Plywood

Mat: Elastomeric plastic/plywood | Finish: Black

Stage Guard Panel is a highly engineered extruded sheet, combining high quality chemical resistants with excellent balance of properties of a thermoplastics olefin elastomer structure.

Part Number	Plywood	Thickness mm / in	Weight Kg / lbs
510-7426070900	Exterior Birch	7.0 / 0.27	11.5 / 25.2
510-7439070900	Exterior Birch	10.7 / 0.42	16.9 / 37.2
510-7461070900	Exterior Birch	13.5 / 0.53	21.4 / 47.2
510-7476070900	Exterior Birch	19.7 / 0.78	30.1 / 66.2
510-7496070900	Exterior Birch	25.7 / 1.01	38.7 / 85.2

- High Impact resistances
- Good weather & chemical resistance,
- Deep texture Improves grip when laminate is wet
- Excellent ductility at cold temperatures (less shatter)
- Can be laminated to multiple substrate thicknesses
- Ideal for use with event staging and risers, decking, mezzanine floors etc.
- Sheet size is 48" x 96" .



Grip Texture